



Monthly Report

April 2025





# April 2025



## Introduction & Contents

Project Play is a grassroots NGO working to create safe spaces for children on the move in northern France to play, learn and grow.



In this report:

### Updates, News & Observations

Updates from the UK-France Border, from our team and our partner organisations

### Our Activities

Activities spotlight! Our favourite activities from this month and how we design sessions to support key developmental outcomes for the children we work with.

### What Can You Do?

Further information, contact details and avenues to support us / get involved.



[project-play.org](https://project-play.org)

Contact us:  
[info@project-play.org](mailto:info@project-play.org)

Project Play is a registered French Association, No: W594012083. We also operate under forRefugees, UK Charity No: 1168435.

### Updates from the border

Winter accommodation in Calais closed at the start of April. As a result, many families we work with found themselves sleeping outside in informal living sites again after some weeks inside. At the same time, the number of families in Grande-Synthe increased significantly. This created difficulties for families in Calais and Grande-Synthe as organisations struggled to have enough clothing and tents for everyone.



### Our updates

Inadequate access to clothing, shoes and shelter were the key difficulties were observed amongst families we worked with in April. The lack of appropriate provisions by the French state in this case goes against Article 27 of the UN Rights of the Child: Every child has the right to a standard of living that is good enough to meet their physical and social needs.

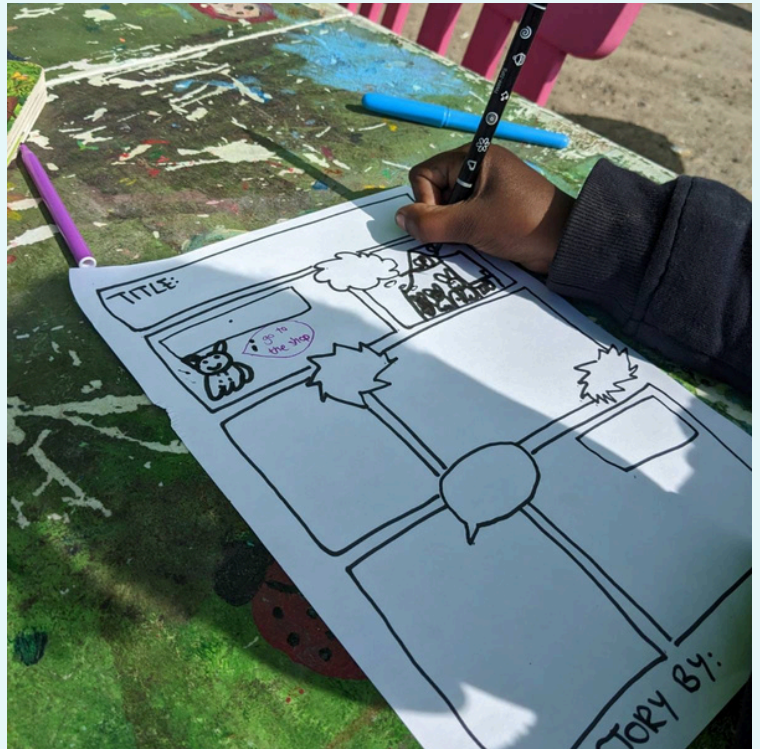
### In the news

At the end of April it was reported that the number of people on the move who had reached the UK in 2025 hit 10,000. This shows how urgently safe routes to asylum are needed, and how the current approach to asylum policy is not working. The repeated attempts to 'secure' the border between the UK and France does not stop people crossing, but makes the journey much more dangerous and, too often, deadly. We call on the UK and French governments to end these hostile and ineffective policies and to instead create accessible routes to asylum, with the priority being people's safety and their right to claim asylum.



### Activity spotlight

April saw child numbers continue to rise and we have been busy across all of our locations. Well done to our team for quickly adapting to the increase of numbers and making sure our activities support children's development whilst giving them a safe space to regulate and process.



Our activities included:



Exploring what community and friendship mean to us



Looking at our emotions and how we can support our emotional needs



Flying off to space!

# April 2025



## What can you do?

Thank you for reading our monthly updates! We couldn't do what we do without the support of amazing people like you. If you'd like to get involved:



## Stay in Touch!

Follow us on social media:



@projectplayfrance



@projectplayfrance



@projectplay7

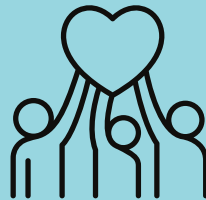
Sign up to our newsletter to receive these updates straight to your inbox each month.

## Donate

We rely on donations to keep playing. If you can, please consider:



Making a one-off donation



Joining our community of monthly donors



## Engage



**Your voice counts.** If you'd like to learn more about life for children on the move, and how you can take action, [click here](#).



Would you like to **join our team**? We're always on the look out for motivated people to help us with our work! [Click here](#) to find out more.



[project-play.org](https://project-play.org)

Contact us:  
[info@project-play.org](mailto:info@project-play.org)

Project Play is a registered French Association, No: W594012083. We also operate under forRefugees, UK Charity No: 1168435.





# Thank You!

**For more info on our updates & observations:**

**Visit:**

[project-play.org/our-advocacy-work](https://project-play.org/our-advocacy-work)

**Contact our advocacy team:**

[advocacy@project-play.org](mailto:advocacy@project-play.org)

**For more info on our activities:**

**Visit:**

[project-play.org/our-work](https://project-play.org/our-work)

**Contact our ground team:**

[info@project-play.org](mailto:info@project-play.org)